

AUGUST - SEPTEMBER 2020

Price 50p

WHO WOULD HAVE THOUGHT IT?!

If you had asked me in January what might happen in 2020 I'm not sure what I would have said, but this springs to mind:

A few days in Northumberland, exploring Holy Island in peace and quiet (What I wouldn't have known was violent storms on the way up, on the way down and snow in the middle!)

A few days in either Padua or Assisi (or both) soaking up the atmosphere and the odd Negrone - or two! (Fortunately, we never got round to buying the tickets)

Catching up with the family. (I never imagined that they would actually come and LIVE with us!)

Welcoming a new grandchild. (Having to resist having a cuddle, which was much more difficult than I thought.)

Making a tank of petrol last for months!

Zooming, Conference Calling and trying to upload video clips onto Youtube.

Washing my hands like never before.

Having conversations with my grandson about viruses. (And him then creating a costume to be one, followed by dashing round the house and attaching himself to stuff!)

Wearing a mask to go shopping!

Who would have thought it?
Wearing a mask to go shopping!

Never in a million years would I have thought that would be compulsory. Especially after all that Boris said about the Burka! But here I am, the day before we have to do it, with my handbag stuffed full of a selection of masks.

I have tried them a few times, and however snazzy the fabric or bright the colour, I can't say I like them, but I know that I will get used to it.

I rather wish it had been compulsory from the beginning so that I would have got used to the glasses-steamed up-Dick Turpin look by now.



I can't imagine that wearing it will encourage me to do shopping; rather the reverse. And now I have heard that we have to wear them in church.

This new normal is certainly new and not very normal.

We are having to take all this on board as we prepare to open our

churches. From the beginning of August we hope to be able to offer a short service of Holy Communion at 11.15am at Churches across the Mission Community. We are in the process of working out a rota once risk assessments have been completed.

Because of the size of some of our buildings, and for the simplicity of test and trace, it will be essential to book a seat in Church via the office email, phone or answerphone. There's more information on page 11.

But back to the masks. I was reminded that Moses had to cover his face after he had spent time talking to God because his face was so radiant it glowed! The people found it unnerving. How wonderful if would be if our places of worship were so full of God's presence they glowed! And, despite having to wear a mask our faces glowed too!

Here's hoping that being full of the presence of God will be our new normal!

*With my continued love
and prayers,
Steph*

Please look at the website for any updates regarding health guidelines for churches, or changes to events and services.

THE EXE VALLEY MISSION COMMUNITY
Calverleigh, Cruwys
Morchard, Loxbeare,
Oakford, Rackenford,
Stoodleigh, Templeton,
Washfield and Witleigh
www.exevalleychurches.org

RECTOR

Rev'd Stephanie Gordon-Jeffs
The Rectory, Witleigh,
Tiverton, EX16 8JQ
Tel: 01884 250417
Email : Steph@
exevalleymissioncommunity.org
NOT TUESDAYS PLEASE

PERSONAL ASSISTANT

Stephen Hirst
C/O The Rectory
Tel: 01884 250417
Email: office@
exevalleymissioncommunity.org

READER

Mrs Anna Hansford
The Paddock,
2 Kensington Court,
Washfield, Tiverton, EX16 9QU
Tel: 01884 253463
hansfordam@john-lewis.com

MAGAZINE EDITOR

Dawn Williams
Post Farm
Dulverton
TA22 9RU
01398 324035
today@exevalleychurches.org

ADVERTISEMENTS

Dawn Williams
As above - using email address
todayadverts@aol.com

Advertisements are accepted and included in good faith - but the Exe Valley Mission Community accepts no responsibility for the performance or non-performance of the Advertisers

CHURCHWARDEN CONTACT DETAILS

CALVERLEIGH
Aubrey Goldsworthy 01884 255248
thegoldsworthys@yahoo.co.uk
Jackie Herniman 01884 255814
jmherniman@talktalk.net

CRUWYS MORCHARD
Diana Vincent 01363 860227
vindr@hotmial.com
Sarah Cruwys 01884 860287
wagscruwys@live.com

LOXBEARE
Ron Tidball 01884 881362
margaret.n.tidball@gmail.com
Jean Heard 01884 881400
jeanm.heard@googlemail.com

OAKFORD
Wendy Boynton 01398 351383
mboynton@btinternet.com
Dawn Williams 01398 324035
dawnannwilliams1@gmail.com

RACKENFORD
Please contact Personal Assistant
Steven Hirst
Details in first column

STOODLEIGH
Margaret Cuningham 01398 351252
margaret.cuningham6@gmail.com
Chris Whitehead 01398 351317
chris@coalole.eclipse.co.uk

TEMPLETON
William Withers 01884 253030
william@williamwithers.co.uk
Reg Coffin 01884 860246
sueandreg.coffin@fhsinternet.com

WASHFIELD
Jeanne Jones 01884 254306
jeannejones007@gmail.com

WITLEIGH
Brenda Tucker 01884 252431
tucks@btconnect.com
Paul Iliff 01884 253473
pe.iliff@tiv.eclipse.co.uk

EXE VALLEY WEBSITE

www.exevalleychurches.org

It's the best place to go for updates about what's on and what we do.
A recent addition to the website is a monthly Prayer Diary with a topic to pray for, each day of the month.

EDITORIAL

With lockdown restrictions easing I am very pleased to report that the Today Magazine is going to print this month !

Fifty copies are being delivered to each parish for distribution to those households unable to access the magazine online.

Hopefully by the time of the next magazine we will be getting back to normal. The 'new normal' anyway.

I really do encourage everyone to take a look at the Mission Community website where you will find all the updates regarding services.

And a thought to leave you with;

Even as the water falls on dry tea leaves and brings out the flavour, so may Your Spirit fall on us too, so that we may bring refreshment and joy to others.

Dawn


Sue Beer
Made to measure curtains and blinds
Call 07519 472898



ADULT BALLET CLASSES
(late teens and on)
Taken by Amanda Knott
(Trained at Royal Ballet School and performed with Rambert)

ALL ABILITIES WELCOME

MONDAY EVENINGS
7.45 - 8.45 pm in the
PETROC FITNESS STUDIO, TIVERTON
£7 per Class or
£35 for 7 Classes in a row
(£5 per Class)



Classes not held on Bank Holidays
01884 855218 or 7815898448

FROM STEPH

BIBLE STUDY via ZOOM

Do please join us for a Bible Study on Wednesday evenings 7.30pm using Zoom.

We would love to see you, whenever you can make it.

The ID and password can be found on our website

Join us for our weekly

Coffee Morning via Zoom.

This takes place every Wednesday morning at 10.30am

Join us when you can and leave when you have to!

The ID and password can be found on the website.

EXE VALLEY MISSION COMMUNITY

Alleulia! He is risen indeed! He is risen indeed! Alleulia! What a great moment we have come to as we begin the long process of opening our churches for worship and to celebrate Holy Communion. Our first service will take place on

Sunday 2 August at 11.15am at The Church of the Holy Cross, Cruwys Morchard

Everyone from across the Mission Community (and elsewhere!) are very welcome. Booking essential.

Please see all the COVID-19 precautions on page 11

FILM CLUB

SO FAR WE HAVE WATCHED AND DISCUSSED 'VICTORIA AND ABDUL', 'DARKEST HOUR', 'EDUCATING RITA' AND ALAN BENNETT'S 'TALKING HEADS.'

ALL THE FILMS ARE CHOSEN FROM MAINSTREAM TV, BBC OR ITV.

DETAILS OF THE NEXT ZOOM FILM CLUB MEETING CAN BE FOUND ON THE WEBSITE

The FORCE Cancer Charity Support & Information Centre is temporarily closed

but we are still here to help

Monday-Friday 09:30-16:30

For cancer support and information plus advice on claiming benefits

☎ 01392 406151

✉ support@forcecancercharity.co.uk

For psychological and emotional support

☎ 01392 406168 / 406169

✉ help@forcecancercharity.co.uk



TODAY Magazine

is printed by

IMPACT Print and Wear Ltd

60 Bampton Street,

Tiverton

EX16 6AH

07980745747

peter@impactprintandwear.co.uk



Steve Rolfe Oil Tank Installation Specialists

A family run business with over 30 years experience of providing professional oil tank installations, covering Devon and Somerset.

*Plastic - Single skin and banded

*Steel - Single skin and banded

*Fuel dispensing tanks

For more information

T: 01398 351471

M: 07894 080143

fionarolfe@live.co.uk



www.steverolfeoiltankinstallationspecialists.com

NORTH DEVON TYRES
ALLTYRES & EXHAUSTS

UNBEATABLE PRICES ON BATTERIES, AGRI, IMPLEMENT & TRUCK TYRES
HUGE STOCKS AVAILABLE

SOUTH MOLTON 01769 573941

TIVERTON 01884 243430

24 HOUR BREAKDOWN SERVICE THROUGHOUT THE SOUTH WEST
07736271866

FITTING ON-SITE
FARM OR
ROADSIDE



AGRICULTURAL & COMMERCIAL TYRES AVAILABLE



FROM STEPH



**On Your Marks,
Get Set, Go !**

**Wednesday 5 to Friday 7 August
At Calverleigh Parish Hall
10.30am - 3.30pm
All primary school age children welcome**

**IT IS WITH GREAT SADNESS THAT WE
HAVE HAD TO CANCEL THIS YEAR'S
HOLIDAY CLUB**

**WE LOOK FORWARD TO MEETING YOU ALL AGAIN
IN 2021**

The Bible teaching will be learning about Jonah through activities which will include talks, drama, singing, prayer, crafts, games and more.

RoseTime Flowers

43 Bampton Street, Tiverton, EX16 6AH



Tim Nichols
Tel: 01884 561763
Unique affordable
floral designs
for all occasions

www.rosetimeflowers.co.uk

**G P Stuckey
General Builder**

Ashley Park Farm,
Seven Crosses, Tiverton,
Devon, EX16 5NW
Tel: 01884 258481
Mobile : 07434 616399

Extensions, Roofing,
Plastering, Painting,
Pattios and Drives,
Plumbing, Stone Walls,
Listed Building Works,
Lime Plaster Cob

**HAVE A REAL CONVERSATION TO HELP
YOU PLAN YOUR FUTURE**

Having a local office means we are accessible and on hand to understand your needs, because time spent on a real conversation allows us to appreciate the finer details.

Call 01884 253550 or pop in, Key House, 4 Woodward Road, Howden Industrial Estate, Tiverton, Devon, EX16 5GZ



Agent of The National Farmers Union Mutual Insurance Society Limited.

FROM STEPH

QUIZ TIME

With masks being part of our new normal, here's a quiz about them!

1. Gaston Leroux's novel, written in 1910 has been adapted many times. What is the name of the character who prowls the Paris Opera at night, wearing a mask?
2. How is the mysterious French prisoner, made famous by a novel by Alexandre Dumas known?
3. In the Bible, Moses met with God and had to cover his face. What was the name of the mountain where he talked to God?
4. Which famous couple met at a masque ball and fell in love?
5. Who wrote 'Mask of the Red Death' in 1842?
6. Who starred in the 1994 film 'The Mask'?
7. What is the name of the fictional character who is portrayed as a dashing masked vigilante and whose name means 'the fox'?
8. What was the name of the Lone Ranger's horse?
9. Who are the masked alter-egos of Bruce Wayne and Dick Grayson?
10. What is the name of the classical Japanese dance-drama which involves the use of masks?
11. What is the name of the American heavy metal band from Iowa, who wear unique, individual facemasks and matching uniforms?
12. What is the name of the form of theatre characterised by masked types which began in Italy in the 16th century?
13. What was the name of the Victorian man whose deformities made him a freak show exhibit, and who had to wear a special cap and hood to hide his deformities?
14. In Greek theatre what did the happy mask and the sad mask represent - and who were their Goddess muses?

(Answers on page 18)

GSH **G S HAYDON & SON**
 Carpentry & Joinery
 Established and family run since 1926
 Undertaking all aspects of carpentry and joinery



windows-doors-stairs-interiors-kitchens
 conservatories-refurbishments

T : 01769 572134
 W : www.gshaydon.co.uk
 E : info@gshaydon.co.uk
 A : Pathfields Business Park, South Molton

DEEPALLER FARM B&B
 LOXBEARE, TIVERTON, EX16 8BX



Very accessible and yet private B&B - only 10 mins from Tiverton.
 En-suite & private bathrooms.
 See our website for details and reviews.
 e-mail: deepallerfarmbandb@hotmail.com
www.deepallerfarmbandb.com
 Mike & Sheila Watson
 01884 881410

Exe Valley Osteopathy
 Sam Mildren & Lauren Mildren
 Conveniently located in Tiverton & Dulverton
 07902831602
www.exevalleyosteopathy.co.uk

 **JSP-Electronics**
 Digital Engineering for everyone

Computer Repairs and Upgrades
 TV and Satellite Installation
 TV Sales and Repairs
 Networking and CCTV
 Contact Jamie (ex Stoneman TV)
 01884 243997 or 07999909130
www.jsp-electronics.co.uk

FROM THE ARCHIVES

'TODAY' 50 years ago
August / September, 1970

The lead article in the combined August and September issue focussed on the deteriorating moral standards within society, and warned that if we did not speak out against such attitudes, we were effectively condoning what was happening.

The reliability of computers was brought into question, especially in relation to "computer errors", where the computer software is blamed for a mistake, when it is a mistake by the person inputting the data!

A group Confirmation service was to take place at Witleigh in September.

Members of the Mothers' Union were concerned about the recent events in Northern Ireland, and a joint service had been arranged with the Catholic Women's League, to take place at Calverleigh.

Loxbeare's church sheep had produced a profit of £60.

The Oakford gymkhana would take place in September.

The Rackenford bell ringers had finished second in their group at a competition at Plymtree in July. A sponsored walk was being planned to raise funds for the organ and Sunday School funds. A toy-making competition for under 17s was to take place.

The potential demolition of School Cottages at Stoodleigh had been staved off, at least for the time being, but they would now remain un-occupied for two years, pending a final decision in 1972. A dance during July at Clapps in Tiverton had raised £32 for hall funds.

Templeton were running an outing to Teignmouth in August.

Washfield's church fête had raised £130.

Witleigh were considering the purchase of an organ to replace an aged and temperamental harmonium.

Paul Iliff

NATURE NOTES

One swallow does not make a summer so given how important the Exe Valley is to these visitors we should be in luck for many years to come.

I imagine the main reason for this is the ideal climate for flying, biting insects which together with the attacks from below {of smaller than usual ticks} have made 2020 a year of much scratching.

We welcomed back the swallows that routinely nest in our lean to and because of the lockdown we have closely shared the creation of a new family. We have two nests in the lean to and each year lay out welcoming newspapers below but it may be fanciful nonsense to believe that the returnees are the same, or related to those who have visited before.

For some inexplicable reason I have always felt uncomfortable when watching small birds being ringed for identification, so no doubt I will prefer to persist with a possible misconception.

The close affinity between man and barn swallows has continued through the centuries and ancient folk lore deemed it bad luck to remove their nests. Like most myths the practical benefit to mankind and livestock of reducing potential disease carrying insects probably lies behind such traditions, coloured also with our sense of admiration.

As the brood of four grew bigger we spent many evenings watching the feeding time and listening to the daily increase in volume of noise from the nest. Both parents returned at twenty second intervals but quite how they could catch food, fly in at about 25 m.p.h. and effect a turn and a stop in a space of 2 yards would be beyond belief if it hadn't been witnessed.

There was one pause in the proceedings when silence reigned and no parents returned, so we presumed fledging had finished. Not so! Two huge crows, as big as buzzards (or so it seemed) were also sharing observation from a nearby tree – a fact immediately understood by the family and only belatedly by us.

This moment encapsulated an almost symbiotic relationship with these birds. We were doubly rewarded in the early hours by the fledglings resting by our bedroom window seemingly saying goodbye whilst resting from the shock of their first flight.

Thomas More

Affordable fares : Free with Senior Bus Pass

EXE VALLEY MARKET AND COMMUNITY BUS



Scheduled route runs every Tuesday and Friday between Oakford and Tiverton via Stoodleigh, Washfield, Lurley, Loxbeare and Calverleigh

For more details or to book a seat ring Colin Radford on 01884 881351 or Jennie Chappell on 01398 351666

www.exevalleymarketbus.btck.co.uk

AVAILABLE TO BOOK - FOR LOCAL GROUPS

**VOLUNTEER DRIVERS
ALWAYS NEEDED**





ARBORICARE



LTD Est. 1988

TREE SURGERY

- FULLY INSURED
- ALL ASPECTS OF TREEWORK
- FELLING
- STUMP GRINDING
- FULLY QUALIFIED STAFF
- PRUNING AND MAINTENANCE
- PLANTING
- COUNCIL APPROVED
- POLLARDING
- ESTATE MANAGEMENT
- 24 HOUR CALL OUT

Call Colin Inder For Free Quotation

T: 01823 462972 M: 07831 108445

www.arboricare.co.uk • arboricare1988@gmail.com



LIGHTHOUSE NEWS

Proclaiming the Gospel since 1988 By serving Him, we are serving you

Jesus said, "I am the light of the world. Whoever follows me will never walk in darkness, but will have the light of life".
John 8:12 (NIV)

When we sent out the last Lighthouse Newsletter for April (in March) it was just before the outbreak of the coronavirus. In it we were looking forward to celebrating Easter and wrote about the changes to the menu we were going to introduce. But suddenly everything changed, and we were forced to cease trading at very short notice.

Now, with the lifting of restrictions, we have been able to slowly reopen Lighthouse. In mid-June we opened just the shop with limited opening hours, but had to keep the café and second-hand book section closed. With the further lifting of restrictions, we have been able to reopen the café and second-hand books, but in a very limited way, from 24th July. We still have restricted hours, 9:30 am to 2:00 pm Monday to Friday and 9:30 am to 12:30 pm on Saturdays.

In the café, to maintain social distancing, we have only two tables in use with only two chairs to each table. We are asking our customers not to linger too long at a table but to vacate it soon after they have finished their drink and food to allow other customers to use it. And we have had to simplify the menu to just hot and cold drinks and whatever cakes and traybakes are available.

We have also had to put a limit on how many people can visit the second-hand books, just one 'bubble' (there's a new meaning to an old word!) at a time.

Please note that we have to limit the number of people in the shop and café at any one time to 6 and in line with government rules you must have some form of face covering, except when sitting at a table. There are hand sanitizer dispensers around the shop and we would ask you to use them before touching stock. If we all use a little common sense then it will help to keep us safer.

We know that many shops and businesses will not be reopening after the pandemic crisis has passed but we believe that our God would not have provided so generously to allow us to open a new shop only for it to fail a few months later. He kept us going at New Creation for 30 years, when there were difficult times, and we trust Him to help and guide us through another 30 years at Lighthouse, because we know that it is only with His support, guidance and blessings we are still here today – Praise the Lord.

With every blessing,
Lighthouse Christian Books and Café
Registered Charity Number 1063294
13 Bampton Street
Tiverton
EX16 6AA
Phone: 01884 255769

PARISH ROUND-UP

CALVERLEIGH

What an extraordinary time we have all been living through; self isolation, social distancing, meeting at a safe distance, family bubbles, returning to work and lock-down easing. Hopefully you have come this far relatively unscathed and in a position when you are now able to meet up with family and friends and begin to venture further afield while still stay alert and keeping safe.

We hope that there have not been any major local casualties as far as business or job losses go. These have been unprecedented times with people being furloughed etc... and you have been in our prayers as we continue to go through uncertain times.

It has been lovely to be able to access the Sunday services along the way, to listen out for familiar voices through Conference Calls and for those brave enough to log on to Zoom, to match faces to the names that we have come to know over the past 4 months from not just our Mission Community but from our town churches as well. Thank you Steph and Robert for all you are doing to provide access to a varied range of activities through faith and fellowship.

As this goes to print we are not yet able to open our Church for private prayer as we are unable to access the Church to clean it due to restoration work being carried out to the church windows.

continued overleaf →

Alex CHIMNEY SWEEP
THE DEVON SWEEP
Alex Mortimore
(01884) 250573
07526 234372
www.the-devon-sweep.co.uk

Ray Westcott & Sons
Traditional West Country Thatchers
Over 35 years experience. NO job too SMALL
Estimates given FREE

Tel: 01884 861577
Mobile: 07990951809
or: 07788293580

Holiday Cottages in Ramstorland Barns
Stoodleigh
Nestled on the side of a lovely, south facing valley, our cottages are light, bright and modern. Perfect for visiting family or friends. Please ring Jill on 01398 351334
www.ramstorland.co.uk

PROFESSIONAL TENNIS COACHING
Call Giles on 07963 646402

LTA LICENSED COACH

F. BALMENT
& Sons Ltd. EST. 1930
BUILDERS CONTRACTORS
DECORATORS
STONE AND BRICK WALLING
PATIO'S - PAVING
'Davia', Washfield, Tiverton.
Tel: 01884 256094

West Ridge Veterinary Practice
Professional veterinary services for your pets, horses and farm animals throughout Mid-Devon
Witheridge 01884 860236
Winkleigh 01837 83240
Lapford 01363 83317
www.westridgevets.co.uk

PARISH ROUND-UP

A risk assessment has been carried out with a review date of 7 August. Once scaffolding has been removed from the inside of the Church, cleaning can begin and distancing measures put into place for the safe return to re-opening.

Many of you are keen to be able to access the building and it will be available as soon as it is safe and practical for preparations to take place.

Thank you to all of you who have been keeping an eye on the Church whilst travel restrictions have been in place. Knowing that there have been people taking regular walks to and around the churchyard to help out has been a great relief.

Thanks also go to those of you on the mowing rota who have been taking your turn to keep the churchyard looking neat and tidy once again now that restrictions have been eased and to the unknown person who has been helping to keep the water flowing into the pond for the past few months.

Although we have been unable to undertake some of our 'normal' fundraising activities, we are grateful to Rachel, April and Charlie for continuing with their sponsored walk which took place near the end of June. Along with their crowdfunding page on the internet and donations handed to them a total of £930 was raised towards the window restoration fund. Well done and we hope that the feet were not too sore at the end of it.

The annual Potato Competition also went ahead. Gillian made sure that everyone knew when to dig up their

spuds. The weights were then written on a piece of paper, put in an envelope and delivered to Gillian. At present we do not know any of the results, so watch this space and thanks for coming up with a way for this bit of fun to carry on as normal. Thank you Gillian and Mary, your efforts are much appreciated.

It is not known at this time whether or not the Autumn Fayre will be able to go ahead in November, but by the time of the next magazine more easing of lock-down measures may enable us to do so.

Mr and Mrs Powell have moved away and are now living in Swindon. A warm welcome to Calverleigh is given to Mr and Mrs Quick who have moved to the village. We hope that you will be very happy in your new home.

Congratulations to anyone who has celebrated a birthday, wedding anniversary, birth or other special occasion in the past few weeks. Our very best wishes go to you all.

Thoughts and prayers have been with those who are unwell at this time or waiting for/receiving treatment. We hope that you will be feeling much better soon.

Our condolences go to any who have lost a loved one recently. Our thoughts and prayers are also with you at this most difficult of times when the comfort of family and friends is so important, but not necessarily possible in person.

We remember all medical and care staff who have been doing their best to provide a normal service under stressful conditions since lock-down began.

As the school academic year draws to a close we think of all staff at our local schools who have been working throughout lock-down to care for and educate children of key workers and those in a vulnerable situation and ensuring that those who have been unable to attend school have had a continued education at home.

Coming Up...

We will still have our monthly time on the first Saturday of each month, with the next ones on 1 August and 5 September between 9 and 11am. Do join together with us in prayer if you can.

Unfortunately at time of print we are not currently able to confirm any other upcoming events for your diaries in August, September or October (including the Harvest Festival and our Autumn Fayre), but please keep checking the Mission Community website and our Facebook page and we will keep you up to date. If you wish to run a fundraising or online social event, please let us know.

Mowing Rota

27 Jul - 8 Aug: The Webber Family
 10 - 22 Aug: Mr K Hayes
 24 Aug - 5 Sep: Mr C Durnan
 7 - 19 Sep: Mr A Hancock
 21 Sep - 3 Oct: Mr D White

Have we missed anything? If there is something that you think we should have mentioned, or you have something for inclusion in the next Magazine, please contact Dave Burton 01884 561499 or calverleigh@exevalleychurches.org and get the latest on the website at: www.exevalleychurches.org/calverleigh



little angels
 Daycare Nursery From 3 months to 12 years
 Rackenford, Tiverton, EX16 8DT 01884 881272
 Email:- nicola@littleangelschildcare.org.uk
 Website:- www.littleangelschildcare.org.uk

THE MILL. LOWER WASHFIELD
 Comfortable En-suite Bed & Breakfast
 Accommodation
 Special diets - No problem
WARM AND FRIENDLY WELCOME
 Tel: 01884 255297
 E-mail: themillwashfield@hotmail.co.uk

STUART HAGLEY LTD
BUILDING
 New builds, extensions,
 conversions and alterations
 Please call Stuart on 01884 881487
 or 07926 291 442 for a quote



THE IT DEPARTMENT .NET LTD
 Affordable IT support for businesses
 Home help - Internet related services
 Bespoke computer programming
 www.the-it-department.net 01884 233 772

CLEAN SWEEP
CHIMNEY AND FLUE CLEANING
KEVIN JONES
 TRELAWNEY
 STATION ROAD
 WILLAND
 EX15 2PR
 BRUSH AND VACUUM SERVICE. CLEAN FRIENDLY RELIABLE
 Email kevin@sw33p.com 01884 821297
 Website www.sw33p.com 07773618524



PARISH ROUND-UP

CRUWYS MORCHARD

As I cannot access a website I have not seen the June/July issue of the Today Magazine, so forgot that the August/September issue was due (I am still living in March, when we were shut down!)

I walked down the village street to find out what news there might be to write about, and spoke to quite a number of residents, none of whom seemed to know that the Today Magazine was online, nor did they seem to know about the Conference Call Service on Sunday mornings, the Film Club, Coffee Morning or Bible Study both on Zoom. So sad, without the Today magazine to every house, in hard copy, no one is going to know what's on for the next two months.

Editor's note: COVID-19 may live on paper and cardboard for up to 24 hours and any paper delivery represents a transmission risk. For this reason, parishes are encouraged to look to digital communication and telephone calls to keep in touch. (Church of England guidance 28th July 2020)

The most memorable thing, to me, has been the very sad passing of Frances Lancelles at the beginning of June, followed by his funeral and burial, with Shirley, in the churchyard on 17 July. The cortege drove past the pub, where he was born, with many of the village out to watch him pass, down North Hill to the Church yard, which was filled with many more from his family and village. Frances, we will miss you in the village.

THE CONGREGATIONAL CHURCH
The Congregational Church ARE meeting for worship in the Chapel as usual, with Social Distancing and Sanitisation safety measures in place.
Contact Rev. Ruth on 01363 83451 for more information.

First Sunday All age Service at 4.30pm
Second Sunday Communion at 4.30pm
Third Sunday Join Way Village at 2.30pm
Fourth Sunday Prayer and Praise at 4.30pm

THE PARISH CHURCH, THE CHURCH OF THE HOLY CROSS, remains closed for the time being, hopefully not for too much longer. See page 3.

Flower and Cleaning rota (hopefully)
August 3/10 - Anne Gillbard
August 17/24 - Mrs Townsend
August 31/ 7 September - Marilyn Hill
September 14 - Wendy Lake
September 21 - Cindy Trick
September 28 -Decorators for Harvest
October 5 - Cindy Trick

Further dates (hopefully)
Thursday 10 September AGM at 7.30pm in the Church, perhaps.
Tuesday 15 September Community Lunch; hopefully.
August 23 Community Dog Walk, from the pub, entries from 2pm until 3pm.
October 3 Harvest short service and games, please bring your own picnic tea.
October 4 Harvest Festival, hopefully in the Church, time TBA

November 14 Christmas Fayre – somehow!

Lots of Hopefully!

THE ANNUAL FLOWER SHOW
Although we had hoped to have the Annual Flower Show, the Parish Hall remains closed so we have therefore decided to cancel this year. We look forward to seeing you all at the show next year.

PARISH HALL 200 CLUB
Members please note: As the draws have to take place in public and to date this has not been possible, the Management Committee have decided to transfer this years membership to next year, so please keep your 2020 tickets and the first draw should take place in March 2021. Please check the parish website for further info near the time.
<https://www.cruwysmorchardparish.co.uk/>
Thank you, Mary E Davey 200 Club Secretary.

THE PARISH HALL remains closed until further notice which will be posted on the website.

CRUWYS MORCHARD YOUNG FARMERS.
The Club were nominated during Lockdown by Newton St Cyres YFC to cycle, walk or run 400 miles in a week (the 400 miles is the distance between all the YFC Clubs in Devon) in aid of charity. The members chose the NHS and Age UK and took the challenge “by the horns”. In a week, members clocked up 906 miles and raised £315.00 for both these worthy charities.

CRUWYS ARMS GARDENERS.
We did not meet in June. In July we spent a delightful morning in Clare Penny's magically lovely garden, followed by a suitably distancing picnic. We hope to meet again on the first Wednesday in the month at 8pm in the Cruwys Arms.

YOGA
Hilary is being wonderful, running a yoga class every Thursday morning at 9.30am on Zoom. As soon as the Parish Hall reopens she is planning on doing the yoga classes there.

continued on page 12 

Ian Curtis
Painter & Decorator

Interior
Exterior
Tiling
Wallpapering
Minor repairs
Free estimates
No VAT

Friendly & efficient local service

Contact Ian on
07821 349314 (mobile)

EXTERNAL CLEANING
with excellence and integrity

Clean, restore and protect:

DRIVEWAYS PATIOS
ROOFS RENDER
GUTTERS PVC

**DEVON**
SURFACE CARE

Call us on: 01884 370073
www.devonsurfacecare.co.uk

**FOUR SEASONS**
PROFESSIONAL TREE SERVICES

All Aspects of Tree Surgery
Stump Removal
Crown Lifting Crown Reduction
Grounds Maintenance Grass Cutting
Hedge Cutting All types of Fencing
Wood Chip Seasoned Logs
General Garden Maintenance Turfing
Fully Insured Private & Commercial Customers
Free Quotations
www.fourseasons-treeservices.com
Oliver Vernon
info@fourseasons-treeservices.com
01884 563021/07766168162

**City & Guilds**
NPTC

Robert and Steph's ALPHA on ZOOM



Alpha is a series of sessions exploring the basis of the Christian faith. Each session looks at a different question that people have about faith. It is a chance to explore some of life's big questions. There's no obligation to say anything and there's nothing you can't say!

It's an opportunity to hear from others and contribute your own perspective in an honest, friendly and open environment. Whether you've just started to think about faith and you'd like to learn a little more, or you've been going to church for years – and you're still not sure what you believe, come and join us.

It is with much regret we have had to postpone the start of this course.

More details will be given out nearer the time. And if you would like to join us, but don't know how to use Zoom, please let us know and we will try to help you.

MONEY

As there are no weekly church collections and all our fundraising has necessarily been postponed or cancelled there is some concern regarding church finances.

It may be that you would like to support the church with a donation to help with ongoing costs at this time.

A number of you already continue to do so by direct debit or through parish giving and we are grateful for this. Schemes like The Parish Giving Scheme help our treasurers with financial planning.

If you would like more information about this, please contact either the church office or your church treasurer. Every treasurer has received information from the diocese how to access the Parish Giving Scheme and other opportunities to donate money.

If you would like to make a donation, as a one off gift, or as part of regular giving, you can do so by direct debit, bank transfer or by cheque (please note there may be a delay in paying in).

If your donation is able to be gift-aided, please advise the treasurer as this adds 25% to the donation. All donations will be treated with discretion.

Please don't worry if your circumstances are such that it is not possible at this time, we all support our churches in so many different ways, and I am so grateful for all the things that many of you do.

With my prayers and best wishes,

Steph

IN MEMEMORIAM

Sadly the following have passed away recently.

Gilbert Issac passed away in May having suffered from ill health for sometime.

Pearl Stone who, with her late husband Percy, lived in Rackenford for many years.

Betty Wotton who lived in Stoodleigh for 63 years and was a stalwart supporter of all village activities. Please see Stoodleigh news.

Philippa Laing who lived in Templeton for many years. Her lifelong work was promoting the Templeton Dexter, the smallest breed of cattle in Britain. Please see Templeton news.

Marjorie Ayre also from Templeton will be fondly remembered and missed by all who knew her.

Francis Lancelles was born on 3 July 1934 at the Cruwys Arms Pennymoor where his father Charlie was the publican. At that time the pub was also a farm and Francis worked on the farm until the mid 1960s. He was married to a local Witheridge girl Shirley Phillips and they had five children, seven grandchildren and four great-grandchildren. He started work at Pennymor Timber in the 1970s and became yard foreman. He great leisure interest and skill was wrought ironwork and he had his own forge at his home in Pennymoor. Another hobby of his was darts, he was a very good player and won many trophies.

John Southwood was born on 4 June 1939, he died aged 80 years on 3 April 2020. John farmed all his life on the family farm, Thongsleigh, Cruwys Morchard. He excelled in the art of ploughing and travelled widely to ploughing matches, winning many prizes. His other great love was hunting and he was Joint Master of the Tiverton Foxhounds for several years.

Attending Worship in the Exe Valley Mission Community During COVID-19 What to Expect !

Calverleigh, Cruwys Morchard, Loxbeare, Oakford, Rackenford, Stoodleigh, Templeton, Washfield, Withleigh

Before you arrive:

We can only accommodate a certain number of people at a service, so it will be essential that you book a seat via the church office 01884 250417 or email office@exevalleymissioncommunity.org or by leaving a message on the answer phone. When you book, we will take some contact details. These will be kept for 3 weeks after the service and given to Track and Trace if someone from the service later tests positive to coronavirus.

When you arrive:

The doors will open 15 minutes before the service.

Before that you will need to wait on the church path, 2 metre markings will be chalked on the path to help you stay a safe distance from others in the queue.

The welcomer will let people into the building in households/bubbles.

Face coverings will be required and you will be asked to sanitize your hands on arrival, then go immediately to a seat in church.

The seats in church will be arranged in ones and twos at 2m intervals from each other.

We ask you to go straight to a seat and to remain there for the duration of the service.

Gentle music will be playing to help you pray as you wait for the service to begin.

Windows and doors may be left open to allow some ventilation, so you may notice it is a little cooler than you expect.

During the service:

Single use service sheets will be placed on the pews and we ask you to take these home with you.

Due to aerosol spread, there will be no singing during the service.

We ask that when you are saying the responses that you speak quietly and prayerfully - again to reduce risk of droplet spread.

When we share the peace, we cannot move from our places - we will simply wave or make a sign of peace to those in other households.

During Communion, only bread will be distributed. The priest will wash her hands before and after distribution. The bread will be brought to you at your seat.

If you do not want to receive communion for any reason, that is absolutely fine

- just hold your service sheet in front of you and the priest will pray a blessing instead.

After the service:

After the priest has processed out, the welcomer will ask people to leave a row at a time.

Please wait for the welcomer to ask you to leave. Please take any orders of service home with you.

Please do not stop to chat while leaving the building. Once out of the building you are welcome to talk in small groups of not more than 6 in the churchyard.

Please do not block other people's exit from the building and remember to stay 2m apart from people from other households.

If you test positive for coronavirus up to three weeks after the service, please let the office know.

PARISH ROUND-UP

Welcome to all those who have moved to Cruwys Morchard during 'Lockdown'. In Moor View, Elaine Gale and Chloe, Fraser and Caden, Shaun and Natasha Elsley with Luke, Sophie and Kimberley, Jill and Tony from Longacre, and Allison and Huw at Gogland.

We hope you will all be very happy in Cruwys Morchard.

Our love and prayers go to all who are not well at this time, may you recover soon. Especially Jo and to all those who are grieving.

LOXBEARE

Well it is good writing these notes that lockdown is easing for most with care. We trust and pray that everyone is keeping safe and well. As at the last magazine here in Loxbeare we again say a big thank you to all who have and are still showing care and help to others who still can't or do not feel comfortable shopping etc.

We have several good things to report this time which is great.

Congratulations to Andrew and Christine Radford on their marriage. We wish them every blessing and happiness together.

We send our love and good wishes to Ronald and Rosemary Perry on their recent Golden Wedding Anniversary.

Many congratulations also to Ron & Margaret Tidball who will be celebrating their Diamond Wedding Anniversary on 14 September. We pray God's blessings on them both and thank them for all the

love and work they have put into the Church and village life over all those years. May God grant them good health and many more years together, as I know they both feel very blessed for their happy 60 years of marriage.

We also congratulate Maurice and Marline Taylor on becoming great grandparents again. A little boy born to John and Pam's youngest daughter Lisa.

Alan and Viv's daughter Lucy has also recently had a little girl.

We welcome Oran, Marie, Jay, Cody, Taylor, Emily, Jesse and Maisy who have moved into Loxbeare and are converting the barn at Churchill Croft. We hope you will be very happy living in the village.

Happy Birthday to all with birthdays and those celebrating special occasions in August and September.

There will be opportunity for those who wish to have private prayer at the Church.

Unfortunately, due to restrictions the Church will not be open all the time. If any would like to take this opportunity, please phone Carol on 01884 8814802 so that she can take your names and open the Church for you.

We pray for those who are feeling unwell, receiving treatment, or awaiting operations/appointments.

We pray for our children & young people as their education has been so disrupted. We think especially for those who were unable to take their exams and trust they will be assessed

correctly and given the right grades for their future jobs, college, or university.

We remember the children in year 6 who will be starting new schools in September that the transition will not be hard for them. We remember the teaching and administrative staff with the difficult task of making sure all are kept safe.

May the lockdown continue to ease and may we be spared another spike of Coronavirus. Keep Safe.

OAKFORD

Well, at the time of writing it is 16 weeks since lockdown began and the restrictions are slowly being eased. Some folk are emerging from hibernation and are taking the first tentative steps towards the light and a normal life.

In our village that means The Red Lion is open again for socially distanced business but the village hall is still closed and sadly St Peter's is too. Details about access to the Church will appear on the Exe Valley Mission Community website when it is deemed reopening can be managed safely.

In the meantime Sunday services from the Vicarage are being accessed via Zoom and conference calls. Thank you Steph and Robert for leading these, the bible study groups, the coffee mornings and the film club. Although apart we are still feeling connected.

Thanks are due to some members of the parish who have been keeping our

QUOIT-AT-CROSS, STOODLEIGH



Gold Award Bed & Breakfast,
En-suite rooms, Ground-floor luxury rooms,
Ideal for family and friends, Dog friendly.
Open all year, All welcome.
Linda Hill, 01398 351280
e-mail: quoit-at-cross@hotmail.co.uk
www.quoit-at-cross.co.uk

MOORHAYES MEAT

Tasty, tender and local Aberdeen Angus

".... really delicious!

We'll be back for more from your freezer!"

Freezer Sale: Excellent value, individual joints,
steaks, mince, burgers, stewing steak

Fresh Meat Boxes: Large £110 for 13.5kg
Medium £85 for 9kg



Mobile : 07768630388
annabel@taylor-ross.co.uk
Moorhayes Farm,
Washfield, Tiverton,
EX16 9RF

un-chained .co.uk

Helping you find independent local businesses

Do you run an independent business?
Set up your **FREE** business profile on
www.un-chained.co.uk today

www.un-chained.co.uk/tiverton

PARISH ROUND-UP

spirits up. Sean and Julia Mayer have performed their weekly quizzes ('performed' because there has been a lot of dressing up!) and our thanks to them for inventive entertaining Friday evenings.

Julia has starred in her own local cookery show so no one has the excuse not to enter the cookery classes at the Moorland Food and Produce Show next year and win prizes. Julia has also rolled up her sleeves and baked delicious cakes for the Parish Council which have been distributed around the community.

Our rising star, DJ David Murphy, has kept the music booming and our feet tapping. Peter Mundy, chef at The Red Lion, has produced some first class menus which have been the highlight of weekend evenings and Sunday lunchtimes. Grateful thanks to all of them and to all those who have offered unseen small acts of kindness during the past few months.

Oakford Parish Council.
'Unfortunately due to ill health Richard (Stevens) has been obliged to offer his resignation from Oakford Parish Council. He has enjoyed 40 years of serving and his wish has always been to leave Oakford a better place than when he first became a councillor.'
As acting Chair of the Parish Council, I would like to send our most gracious thanks to Richard for his time and effort on behalf of the Parish. Julia Mayer

The Oakford Players have announced a bounce back in March/April next year with a production of 'The Vicar of Dibley'. The first of lots of events to look forward to in 2021 in the village.

We send our get well wishes to anyone who has been unwell. Heartfelt condolences are sent to Trisha Bailey and family on the loss of Karl on 30th May after a long and distressing illness. You are in our thoughts and prayers. Keep safe everyone and enjoy summer.

RACKENFORD

As we go to print we are not sure if you will be receiving your printed copy (some may) or viewing once again on line. We really do hope the next issue will be delivered to you all as before.

At this time we have no idea when our Church will be re-opening but look forward to the time we can worship together again. On line services are enjoyed by residents of some parishes, also other choices of prayers and getting together are available on the Exe Valley website.

Vera had another brief spell in hospital, but is home again now. We send our love and wish you well Vera. Jacques has also been in hospital after a fall but now recovered enough to be home again with Mary. We wish you well and send our love to you both.

To all our friends in the parish and the Exe Valley we wish you well; take care and stay safe.

Sadly Gilbert Issac passed away in May having suffered ill health for sometime. A private grave side service and committal took place at our Church. A very difficult time for the family and we send our deepest sympathy.

It was also with great sadness that we heard of the death of our dear friend and neighbour Pearl Stone. Pearl (her late husband Percy and family) have lived in Rackenford for many years, firstly at Laneland where they brought up their family, later moving to Trinity View. Pearl was in regular attendance at our church services, helped on the flower rota, and supported all fundraising and will be greatly missed by us all. Our love and deepest sympathy to all the family at this difficult time.

We understand we may in time be able to come together to remember Pearl at a thanksgiving service.

Andrew is continuing with church grass cutting and has had to remove some glass jars with flowers in as a safety precaution to himself and his machinery. Plastic containers only please.

Notices are in place on both our church gates. PLEASE close the gates after you to prevent loose dogs from entering and fouling.

Many thanks to the Fisher family and any others who have kindly been cutting our village green and verges. So nice to see it being cared for. We continue to be most grateful to all volunteers in our shop, helping us in any way they can and to keep us safe when shopping or attending the Post Office.

New flower rotas will be delivered in due course ready for when our church can open again.

continued overleaf →

Painful Feet ? 

Viv Pulford
Foot Health Practitioner
Diploma in Foot Health and Bsc Adult Nursing

Nail clipping and filing.
Corn and Callus removal.
Foot balancing ... and more !!

Treatment in your own home
Phone 01884 861306

local ... convenient ... friendly
YOUR COMMUNITY SHOP AT RACKENFORD

POST OFFICE

For all your grocery and household needs - including speciality bread, local honey and home baked cakes and biscuits.

Post Office (Tues & Thurs am),
Cash ATM, Prescription Service.

Open daily (check for hours)
01884 881740
Visit soon.

 **Homelife Carers**
Your Home, Your Life, We Care

At **HomeLife Carers**, we pride ourselves on offering professional quality home care services to a wide range of clients, throughout the local community.

Our services include :

- Personal Care Services
- Preparation of Meals
- Sitting Services and Night Care
- Home Help and Domestic Services

Call us today for a brochure, to see how we can help you, or your loved ones, continue to enjoy the comforts of that all important place ~ home

Telephone 01884 233700

Unit 5, Oaklands Court, Tiverton, EX16 6TG
www.homelifecarers.co.uk
Regulated by the Care Quality Commission

PARISH ROUND-UP

Some children are back at school and we hope when it is safe to do so others will be able to resume their education in September.

Take care and stay safe everyone.

STOODLEIGH

For the second edition running the Today Magazine is being published as an online version and we hope that it can reach as many readers as possible.

In June we heard the sad news of the death of Betty Wotton.

Margaret Cuningham has written these words:

Betty lived in Stoodleigh for 63 years and was a stalwart supporter of all the various village activities. She was a member of the Tiverton branch of the Red Cross and helped at the Tiverton Disabled Club. She walked with the local Rambling Roses and was a very involved member of the Women's Institute. Betty sang in the Church choir and latterly she joined the Barle Singers in Dulverton, where the choirmaster said she was a sweet, charming and loyal member. One of Betty's greatest assets was arranging the Church flowers and she was responsible for many glorious displays. Betty was the most caring, kind and hospitable lady. She will be greatly missed by her family and by her many friends.

Members of the Stoodleigh Garden Club have paid tribute to Betty in online Garden Chat messages. They told of Betty's love of her garden, which they

said reflected her personality; immaculate to behold but always ready for fun in entertaining friends at her famous teas. Betty leaves a legacy of fond memories to so many in the village. She was a loving and well-loved lady.

Our Rector suggested that we all hold a virtual Flower Festival and we are proud of Stoodleigh's contribution. Here is a photograph of Phyllis Hill's beautiful flower arrangement in the porch of St Margaret's Church.



We are hoping that the Church can be opened for private prayer sometime soon and more up to date information will be posted on the Stoodleigh website when guidelines permit re-opening.

Meanwhile, we in Stoodleigh are enormously grateful to Steph and Robert for all they have been doing to keep the Church alive and together during this unprecedented lockdown time.

At 11.10 am on Saturday 15th August (VJ Day) there will be a national commemoration entitled Ringing & Crying Out For Peace. At St Margaret's Church one bell will be rung

75 times in recognition of the 75 years which have passed since the end of World War II.

The Parish Hall Management Committee continues to review the possibility of re-opening the Hall. In the light of government guidelines at the time of going to press, the committee regrets that it does not currently consider re-opening a possibility. We hope that it will not be too long before we can find a safe way to welcome the community back to the Hall for social activities and classes.

Some of the villagers have been keeping engaged and fit with up to three half-hour Zumba sessions each week via Zoom, thanks to Kim Grimston (351636). Also, Claire Weeks (07793 289461) has created an outdoor Yoga studio in a field at her home and those attending have enjoyed early morning and evening sessions with a glorious view overlooking Oakford.

The Stoodleigh 100 Club is now active and all are invited to join. There are 12 monthly Draws but during the lockdown none have taken place, so you now have time to make sure you are included. Prizes are 1st - £20; 2nd £10, 3rd and 4th £5 each. All funds raised are shared between St Margaret's Church and the Parish Hall and at this time, when our Church and Hall are unable to open and host events, our financial support is needed more than ever. Membership is £15 per year and you can pay by cash or cheque (payable to Stoodleigh 100 Club). Please take your membership fee to Christine Palfrey at Knightwood or phone Christine on 351271 for information.

continued overleaf ➔

LOGS



L Adams Tree Services

City & Guilds
NPTC

All aspects of Tree Surgery

Stump Grinding | Hedge Trimming

Fencing | Garden Maintenance

Grass Cutting & Strimming

Landscaping | Logs

contact Lloyd Adams on



07809
613490

01884
32864

lloyd@ladamstreeservices.co.uk

www.ladamstreeservices.co.uk

William Withers & Co

CHARTERED ACCOUNTANTS

Business & Tax Specialists

t 01884 253030

e info@williamwithers.co.uk

www.williamwithers.co.uk

Quayside House

5 Highland Terrace

Barrington Street

Tiverton

Devon EX16 6PT

PARISH ROUND-UP

Lizzie Isaac opened the doors of the newly refurbished Stoodleigh Inn on Saturday 4 July and welcomed back her customers.

Tables have been spaced to ensure that the government's social distancing guidelines are fully met. The new décor, refurbished toilet block and outside repainting make it a village establishment to be proud of. Michael Isaac has built some wonderful equipment in the children's activity area of the garden and Lizzie's green fingers have produced some beautiful flower displays.

Summer opening hours are:

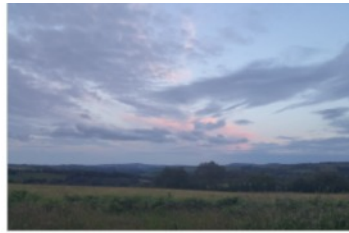
- Thursday: 5 to 10 pm
- Friday: 3 to 10 pm
- Saturday: 3 to 10 pm
- Sunday: 12 to 3 pm and 7 to 10 pm

We send our best wishes to all Stoodleigh parishioners who have been unwell during the lockdown period. Currently Eileen Fewings is in Barnstaple Hospital with a broken wrist and we wish her a speedy recovery.

We are immensely grateful to Geraldine Talbot who runs the Stoodleigh village website. Throughout these months of lockdown Geraldine has kept the village informed and up to date with all things happening in Stoodleigh. These have ranged from information regarding road closures to offers of help and items for sale throughout the village.

If you know someone who is unable to access this newsletter online please print a copy and pass it on, or alternatively ring Sheila Davis (351756) who will be happy to make contact.

TEMPLETON



Covid-19 and our community.

In comparison to where we were at the time of the last newsletter, for many of us, life has become a bit more straightforward.

Restrictions on travel and social activities are easing, some of our children have been back to school and some of us have even been away on holiday but, we know we must remain on our guard during these uncertain times.

While ensuring social distancing, the last few months have been a time of reflection and connection with our neighbours, our friends and our community. The lockdown has been difficult and even as things have relaxed a bit, some of us have still had to find ways to cope with isolation and anxiety. Yet there have been so many uplifting examples of mutual support and goodwill that even though we cannot yet gather to sing out loud, every small act of kindness and thoughtfulness makes our hearts sing.

A big thank you to all the people across the Templeton community who have been watching out for, shopping for,

helping, and keeping in touch with, neighbours and friends. One small act can make such a huge difference.

Church Services

St Margaret's Church, Templeton, is now open, by appointment only, for private prayer. People wishing to use the church should contact William (tel: 251513) or Reg (tel: 860246) who will open the Church and make sure that it is cleaned after use. Hopefully, the Church will soon open for Sunday services, although the two metres distance will apply.

We would like to say a huge thank you to Steph and Robert for their constant support, good humour and their inventiveness. They have continued to carry out virtual weekly services, coffee mornings, film club, and bible readings with the aid of cloud-based video conferencing technology and conference calls. They are single-handedly responsible for sharp rise in digital technology upskilling in this parish, and no doubt many others.

Church buildings and finance

With the temporary closure of all our churches, not just St Margaret's, there have of course been no services in Templeton, and as a result, no income from collections. However, the bills are still coming in, and if our parish is unable to cover the costs for the upkeep of St Margaret's Church and make our contribution to the Exe Valley Group and the dioceses, then sadly our Church will have to close.

William, as PCC Treasurer, recently circulated a letter to residents in Templeton, suggesting possible ways to help with the church finances, either

ELECTRICAL SERVICES

EMERGENCY CALL OUT

Breakdowns Faults



Jon Grunwell

Providing **EXCEPTIONAL SERVICE**

castlelandhouse@gmail.com





Steve Rolfe

Oil Fired Heating Services

Over 20 years experience of providing a quality service

* Service and maintenance of boilers, Aga's and Rayburns
from £65.00 + VAT

* Installation of boilers and Central Heating systems	* System Power Flushing
* Oil tank replacements	* System updates and sealed system conversions

Tel: 01398 351471

Mob: 07894080143



PARISH ROUND-UP

as a small donation or a regular standing order, with donors able to choose how they would prefer the money to be spent.

We are very grateful for the donations received. The Church has so far raised an extra £1,200, as well as a £10.00 per month standing order which is fantastic. William will be writing to everyone who responded to thank them individually.

The PCC is now in a position to go ahead with a particularly important project awaiting attention; the first phase of the extension of the churchyard which currently has only one plot left. The church will need to find extra funds to complete this project.

Other projects awaiting attention include:

Work on the roof over the nave, as slates are slipping.

Removal of the carpet in the nave to expose the tiles and renovate them.

Opening up and improving drainage around the tower.

Repair of the stone plaque on the wall above the choir stalls.

If you would like to make a one-off or regular contribution to St Margaret's Church expenses, do please get in touch with William.

(tel: 251513, email: william@williamwithers.co.uk).

More information about a date for the Annual Church Meeting will follow.

Village Events

Sadly, but inevitably, many of the annual events we all look forward to here in Templeton have been cancelled this year due to Covid-19.

The Templeton Village Fete, due in August, has been cancelled, but we

hope there may be a chance to hold a similar event on a smaller scale later in the year. Other planned village events that will be postponed until a future date include a Charity Tractor Run, the Duck Race, and a Bingo Night.

On a more positive note, Templeton Village Hall and Social Club has reopened for Social Club members' only club nights on Monday and Saturday nights from 8.30pm with all the required protection, including social distancing and cleaning, following Government Guidelines.

This arrangement will be very closely monitored and revised as necessary.

Welcome to Templeton

We would like to welcome Mrs Joy Field who has recently moved to Fenston Cottage. We hope that she will be very happy here.

In our thoughts

Our thoughts and deepest sympathies go to the family of Bob Primrose who died recently and who lived for many years, with his wife Maggie, who died in 2014, at the Chapel House at Templeton Bridge. They moved to Tiverton some time ago but are still fondly remembered and will be sadly missed by all who knew them.

Our thoughts and deepest sympathies are with the family of Philippa Laing of Little Esworthy Farm, Templeton, who died on June 21st. Her lifelong work was promoting the Templeton Dexter, the smallest breed of cattle in Britain. Not only did she dedicate herself to this but she was president of the Dexter Cattle Society four times. Philippa will be fondly remembered and sadly missed by all who knew her.

Our thoughts and deepest sympathies go to the family of Marjorie Ayre, who has recently died. Miss Ayre lived at Higher Way Farm before moving to Tiverton over 10 years ago. She will be fondly remembered and sadly missed by all who knew her.

Thoughts, prayers and best wishes
Our thoughts, prayers and best wishes are with all those who are unwell, who have been in hospital, are recovering from illness, or who are having a difficult time.

Flowers and cleaning rota

Bindy Linden	2 / 9 August
Gloria Woollacott	16 / 23 August
Clare Trevelyan-Thomas	30 / 6 Sept
Bindy Linden	13 / 20 September
Phillida Strong	27 Sept / 4 October

WASHFIELD

*And the people stayed home.
And read books, and listened,
and rested, and exercised,
and made art, and played games,
and learned new ways of being,
and were still.
And listened more deeply.
Some meditated, some prayed,
some danced.
Some met their shadows.
And the people began to think
differently.
And the people healed.
And, in the absence of people
living in ignorant, dangerous,
mindless, and heartless ways,
the earth began to heal.*

WOTTON of TIVERTON LIMITED



☎ 01398 351221

E-mail: enquiries@wotton.co.uk

www.wotton.co.uk








**Removals
Shipping
Storage**

Covering the UK,
Europe and the
local area
- of course !!

Non  Sibi

Blundell's

PREPARATORY SCHOOL & NURSERY

Your child's school years are the most important in their lives and should be filled with opportunities to develop confidence, knowledge and curiosity in a supportive and exciting environment.

We invite you to join us for a guided tour of the school, during which you can meet our children and staff

Blundell's Preparatory School
Tiverton, Devon, EX16 4NA

Tel: 01884 252393
Email: prep@blundells.org
www.blundells.org/prep

Outstanding Independent Education
for children aged 2-11 years

PARISH ROUND-UP

*And when the danger passed,
and the people joined together again,
they grieved their losses,
and made new choices,
and dreamed new images,
and created new ways to live
and heal the earth fully,
as they had been healed.*

Lockdown has indeed taught us so much and, although it's not been easy, it's shown us that our family, friends, community and those further afield, are there and will always be there...whatever happens.

We may have missed out on things like birthday celebrations, weddings, visiting people in hospital, paying our respects to those departed; even simple things like shopping, going to garden centres, having coffee with a friend and so much more but, in staying safe, we have been strong and resolute and can reconcile that against the things we have had to forgo.

Village social life too, has taken a battering and, as we emerge out of the required isolation, we can look forward to some of those interactions returning gradually as and when they become safer.

Meanwhile we still see the village changing and evolving. We have had to say farewell to Ed and Jo Lane and their daughters as they have moved to Somerset and, in their place, we welcome Andrew and Emma Turner and their sons into the village. Likewise, Sarah and Jack, who have moved in too. We hope that you will all be happy living in Washfield and we will get to meet you soon.

We belatedly wish Hilary Arnold and Maurice Balment 90th birthday wishes as they celebrated these momentous occasions in June and July respectively. Congratulations both.

Look out for more news and updates on the village website and Facebook page 'Humans of Washfield and Lower Washfield'.

We have all been in touch with each other in the Parish and hearing news of the many activities of 'lock-down'.

There has been so much wonderful help from the Washfield Support Group for shopping etc. and so much friendly contact and kind enquiries that those who have been isolated have coped very well.

I am sure we are all very thankful for this and feel fortunate that we live in rural Devon and had time to enjoy a warm, sunny Spring.

Summer is upon us already and much needed rain for the farmers and gardens did come! We are now finding it quite challenging as restrictions relax a little and we are not sure exactly how to deal with it .How 'near-normal' can we be?

As far as the opening of the Church building is concerned we are in the process of studying the safeguarding of health required, and the restrictions are quite daunting. You can see them on the Exe Valley website.

We are looking forward so much to welcoming everyone back to church, but at present it is having to be done very carefully and slowly to conform to

Government guidelines, which include no singing or organ music. In the meantime we continue to have Services every Sunday morning at 10am, either on the telephone, or on Zoom. Steph and Robert share the Service of Morning Prayer and around 150 people join together to worship.

Bible Studies and sociable virtual coffee mornings also keep us in touch, which is a pleasure. We hope the best things of this crisis can be kept, especially for those who find it hard to get to church at the best of times.

You will be pleased to know that, with social distancing, hygiene etc. the contractors were able to fit all the new stainless bars in the stained-glass windows, so now the stone work will be safe and there will be no more rust! They also kindly cleaned the glass so the Church is lighter.

We send our thoughts and prayers to all those who are unwell and worried and anxious at this time. Steph is sad not to be able to visit but is always available for help in other ways. If you know of a need, please us know.

Please be thinking of what sort of event we could have in the Winter - to make up for the sadness of not having the Church Fete, so that we can enjoy ourselves AND raise some money!



KEN HOGAN
TREE, HEDGE & GARDEN SERVICES
Fully Insured & NPTC Qualified Tree Surgeon



Crown Reductions, Felling,
Dismantles, Storm Damage,
Dead Wooding, Stump Grinding,
Hedge Trimming, Logs, Wood Chip

24 Hour Emergency Call Out


www.kenhogantreeservices.co.uk
kenhogantreeservices@hotmail.com
01363 860193 or 07946 606093

CHIROPODY / PODIATRY
Practising from Easy Life, Westexe South, Tiverton EX16 5DQ

Alicia Parr BSc (Hons)Pod
HCPC Registered Podiatrist
(HCPC: Health Care Practitioners Council)

* Member of the Society of Chiropodists and Podiatrists *
* Fully Insured *

- . Fully Qualified Podiatrist
- . Nail Care
- . Callous Treatment
- . Corn Treatment
- . Verruca Treatment
- . Heel Pain Treatment
- . Dressing Changes
- . Diabetic Foot Care
- . In growing Toe Nails
- . Minor Surgery
- . Gait and Orthotics Consultation
- . Sterilised Instruments



Tel: 01884258080 / Mob: 07809679277
aliciaparr@talktalk.net

Wednesdays and Fridays 9am - 4pm



BLYTH
construction
(South West) Limited

**COVERING ALL ASPECTS OF
CONSTRUCTION, BUILDING AND
PROPERTY MAINTENANCE.**

Internal and External

Please call Rory on:
01884 860637 or
07818566757

blythconstruction@btconnect.com
www.blythconstruction.net

PARISH ROUND-UP

WITHLEIGH

We do hope you are all keeping safe (and sane) during these unprecedented times. The lockdown restrictions may be being gradually eased, but we still have a long way to go to reach something like normality.

Although churches can now be legally opened for private prayer and for services, and we would love to open our own church, the restrictions which remain in place make this extremely difficult. The PCC has therefore, reluctantly, decided that St Catherine's will remain closed for the time being, but the situation will be reviewed in mid-August.

Members of our community have, nonetheless, been keeping in touch by telephone or e-mail, and this has been very much appreciated.

Our grateful thanks go to all who have given donations to help with our church finances, our income having been greatly depleted this year. Aside from losing the normal proceeds due to the Summer Fête being cancelled (which may well also happen to the Craft Fayre), the absence of Sunday services has meant no regular income from collections. Last year, the cost of "running" St Catherine's was almost £13,000, and that doesn't include major works like the redecoration, but it is not too late if you feel able to contribute.

In this respect, our thanks go to local ex-vet, Stephen, for his wildlife presentation via Zoom. Stephen gave

up his career as a vet to concentrate on his passion for being an amateur naturalist and wildlife photographer / cameraman / film maker. At the time of writing, £86 has been raised for church funds.

Sadly due to the pandemic we have had to cancel this year's Garden & Produce Show, which was due to take place on the 15th August. It's a real shame that we have had to do this, just when we have all been at home a lot more this year and have had time to grow much more in our gardens. Nevertheless, we hope that you are enjoying the fruits of your labour, and look forward to seeing you all at next year's show.

The fate of other upcoming events and special services – Craft Fayre, Harvest, Remembrance Sunday – remains in doubt at this point in time. We will endeavour to keep you informed.

We send our sympathy to John and family on the recent death of Sheila. Both John and Sheila have supported events in the village, supporting our church, village hall and garden show. Sheila also helped to organize our monthly whist drives in the hall. Considering the lockdown restrictions at the time, it was good to see the number of friends and neighbours who gathered in Patches Road to see Sheila off on her final journey.

We welcome Godfrey and Linda into their new home at Springfield, and our best wishes to Keith and Jan on their move next door into The Old Workshop.

Congratulations to Peter and Anne who recently celebrated their Golden Wedding, and to church member Betty on becoming a great-grandmother.

Congratulations, also, to any who are celebrating special birthdays or anniversaries.

Get well wishes go to all those known to us who are receiving treatment, recovering from operations, or who are not well at the moment.

And, to everyone, once again, stay safe and take care.

PRAYER

Churches are good for prayer, but so are garages and cars and mountains and showers and dancefloors.

Anne Lamott

QUIZ ANSWERS

1. Phantom of the Opera
2. Man in the Iron Mask
3. Sinai
4. Romeo and Juliet
5. Edgar Allan Poe
6. Jim Carrey
7. Zorro
8. Silver
9. Batman and Robin
10. Noh
11. Slipknot
12. Commedia dell'art
14. Elephant Man
15. Comedy and Tragedy; Thalia and Melphomene

At Cathedral Financial Management your trust is the most precious thing we earn



Est.1993, our clients feel safe in the knowledge that we are an experienced team of professional Independent Financial Advisers & Chartered Financial Planners helping them to build wealth, financial security & peace of mind.

Investment Advice, Discretionary & Advisory Portfolio Management, Pensions, Retirement Planning, Inheritance Tax, Long Term Care & Estate Planning. Private Individuals & Businesses. Why not give us a try? One of our Chartered Financial Planners, Mrs Mary Shere APFS ACFA, lives at Oakford. Home visit or office meeting? We'll be pleased to take your enquiry.



Exeter 01392 211800
www.cfmltd.co.uk
maryshere@cfmltd.co.uk



trust is priceless

Cathedral Financial Management Ltd is authorised and regulated by the Financial Conduct Authority

BLACKERTON CROSS GARAGE

CARS, VANS & 4X4 SALES

SERVICE, REPAIRS,
WELDING, TYRES & EXHAUSTS
MOT Preparation

01398 341405

View our current vehicles for sale at:
www.blackertoncrossgarage.co.uk

sales@blackertoncrossgarage.co.uk

East Anstey EX16 9JT
On the B3227 between South Molton & Bampton

CHILDREN'S PAGE



Secrets of the kingdom 26 July – 1 Aug
Bible time **Matthew 13.31-33,44-52**

Jesus gives his followers five examples of what the kingdom of God is like.

Life today

Have you ever tried to describe something that seems too amazing for words? We often have to create an image or tell a story, to try to give a sense of what it is like. Jesus tries to describe the kingdom of heaven and uses images and stories to help give us a sense of what it is like.

Read the story together then explore it using these questions.

Question time

- What do you normally imagine a 'kingdom' to look like? Do these images used by Jesus fit with that picture?
- Which of these five images of God's kingdom do you find most helpful? Why?
- How would you describe what the kingdom of heaven is like?

Activity time

- **Postcard**
Create a postcard with a picture on the front which shows something about God's kingdom. You could use one of the images Jesus gave, or come up with one of your own. Post it to someone you know, and ask them to tell you what they see in the picture.
- **Pictures**
It has been said, 'A picture paints a thousand words.' Look through albums of family photos and spend some time talking about all the stories that these pictures represent. As you look back over these things that have happened, can you see God at work in your life?
- **Daily parables**
For the next five days, choose one of these five images Jesus used and read about it in the morning. Think about what it says about the kingdom of heaven. Throughout the day, try to look for signs that remind you of this.

Here are some parables that Jesus told the crowd:

The parable of the mustard seed

'The kingdom of heaven is like a mustard seed, sown in a field. It is the smallest of seeds but grows up into a huge bush, and the birds of the air come and nest in its branches.'

The parable of the leavened bread

'The kingdom of heaven is like yeast that a woman mixes with three lots of flour, until it is all leavened and ready to rise.'

The parable of the hidden treasure

'The kingdom of heaven is like treasure hidden in a field. Someone finds it, hides it again, and then is so very, very happy, he goes and sells everything he has to buy the field.'



The parable of the fine pearl

'The kingdom of heaven is like a merchant who is looking for fine pearls. He finds one very special and valuable pearl, and goes and sells everything he has to buy it.'

The parable of the good and bad fish

'The kingdom of heaven is like a net. The net is full of fish, of all shapes and sizes. It is pulled ashore. The good fish are put in baskets while the bad fish are thrown away. And it will be like this at the end of time when the angels will separate the good people from the bad.'

leavened yeast is added to bread to help it rise; **merchant** a trader.

Prayer time

Crouch down into a small ball, and slowly stretch out until you are as tall as you can be as this prayer is read:

Like a tiny seed that's planted,
 or yeast that's put in dough,
 grow your kingdom in us, God.
Amen.

© ROOTS for Churches Ltd 'Family time' complements the weekly worship and learning resources for families at www.rootsontheweb.com

Fernside **AA**
Bed and Breakfast ★★★★★
 Bed & Breakfast 2019 Gold Award

Award winning AA 5-Star Gold B & B and Breakfast Award

Warm Welcome. En-suite rooms. Special dietary requirements catered for.

Fernside Cottage, Templeton Bridge, Tiverton, Devonshire, EX16 8BP

Email: ianthorington@hotmail.co.uk
 Website: www.fernsidecottage-bed-and-breakfast.co.uk
 Telephone: 01884 860025

Cruwys Morchard Parish Hall

For weddings, parties or other events. Well equipped and ample parking

Tel: Diana 01363 860227
www.cruwysmorchardparish.co.uk

DEVON & SOMERSET MARQUEES LIMITED

For that Special Occasion

30 years in the Marquee business

Telephone 01398 351210

E-mail: enquiries@dsmarqueses.co.uk
 Website: www.dsmarqueses.co.uk

Chimney Sweep

CRB CHECKED
 CLEAN CERTIFICATED
 Phillip Melville

01363 877411

FROGWELL FLOWERS

Grown not Flown

Flowers for every occasion

frogwellflowers@mail.com
 07772508949
 Terri Lamb



STAG INN

Rackenford, EX16 8DT

Apsleys
CHARTERED ACCOUNTANTS
Accounts Preparation, Sole Traders, Partnerships & Limited Companies and Tax Specialists
 Our services are tailored for your needs at competitive fees
 Please contact David Wicks, Phil Morrish or Michelle Hutchings on 01884257725
 Email: tiverton@apsleys.com
 Website: www.apsleys.com


RICHARD GRANT MEMORIALS
 2-4 WESTEXE NORTH TIVERTON DEVON, EX16 5LX
 TEL: (01884) 255737
WWW.FINEMEMORIALS.CO.UK


HIGHFIELD CERAMICS SCHOOL

- Professionally Qualified Teacher
- Adults and Children
- Mixed Ability Classes
- All Aspects of Claywork
- Mornings and Evenings
- Parties for Special Occasions
- Mixed Groups
- D of E Students

Call Rosie on:
01884 257123
www.ceramics.lu

Opening hours:
 PLEASE PHONE TO ENQUIRE ABOUT FOOD
Wednesday to Saturday
 Lunch 12.30pm to 2.30pm
 Dinner 6.30pm to 9pm
Sunday Lunch 12.30pm to 3pm
 01884 881755
www.thestagdevon.co.uk


GREEN VALLEY PEST CONTROL
 PAUL WALKER
 Tel. No. 07714 239656

All aspects of Pest Control undertaken for your Domestic, Commercial and Agricultural requirements.
 Over 10 year experience - BPCA qualified and fully insured.

2 Rose Cottages, Nomansland, Devon EX16 8NN
 Email: paul@greevalleypestcontrol.co.uk
 Web: www.greenvalleypestcontrol.co.uk

The views expressed in this publication are not necessarily those of its readers.

CLASSIFIED ADVERTISEMENTS

BERRY BEAUTIFUL
 by Amanda Berry
 Offering a wide range of treatments including Dermalogica Facials, Gelish Nails, Massage, Waxing and Tinting


 07772982863
[f amandaberrybeautiful](https://www.facebook.com/amandaberrybeautiful)
amandakingdom89@hotmail.com
 dermalogica 

BUILDING REQUIREMENTS
DC BRITTON CONSTRUCTION LTD
 would be pleased to quote for your building works, incorporating new builds, conversions, extensions, alterations and refurbishments.
 For a personal reliable service, call Dave
 on 01884 881643 or 07974412097.

Men in Sheds, Lunch Clubs, Arts and Crafts, Tai Chi, Reminder Finders, Day Care, Foot Care and many more !
 Plus - Information and Advice at your fingertips
 Call us now for more details !

 **01884 255369**
 Charity No: 1070792

S.S. ROOFING EST 30 YEARS
SPECIALISTS
 Family Run Independent Roofing & Leadwork Specialists Covering Devon for 30 Years



Re-roofing • New Builds
 Residential • Domestic • Commercial
 Public sector • Heritage & Listed • Leadwork • Conservation

Phone : 01884 252768 / 07856250874
 Email: ssroofingspecialist@hotmail.co.uk
 Web: www.ssroofingspecialist.co.uk Fax:01884 255167

FITNESS FORMULA
 Personal Training and Fitness
 Small Groups, 1 to 1, Boxing, Circuits, Pilates
 Jennifer Bricknell
 Tel: 07980008726
jenniferbricknell@hotmail.co.uk
www.jenniferbricknell.co.uk

 **S SQUIRE & SONS**
 Local friendly handyman services.
 Interior/Exterior work, Plastering, Painting, Decorating, Fencing, Garden maintenance and Bespoke handmade furniture.


 Call Sam 01884 255723 / 07922170639
 E-mail sam.wj.squire@gmail.com

ARCHITECTS



- Experienced, friendly, locally based in Tiverton, RIBA Chartered Architect.
- Practice also located in Exeter.
- Specialising in the adaptation of listed buildings, residential extensions, renovations and low energy new builds.
- For a FREE consultation with hmad|architects please contact Luke McAdam; 07511 690877

01392 459777 – mail@hmad.co.uk – www.hmad.co.uk

 **Satin Touch**
 Bridal & Special Occasion Alterations
 Bespoke Fascinators

The Studio
 St Thomas House, Ash Thomas, EX16 4NT
 Call 07974 039860 for an appointment

Piano & Keyboard Lessons
Mandy Grant BMus ALCM
 Tel: 01398 351212
 Mobile: 07847395770
mandygrant100@outlook.com

